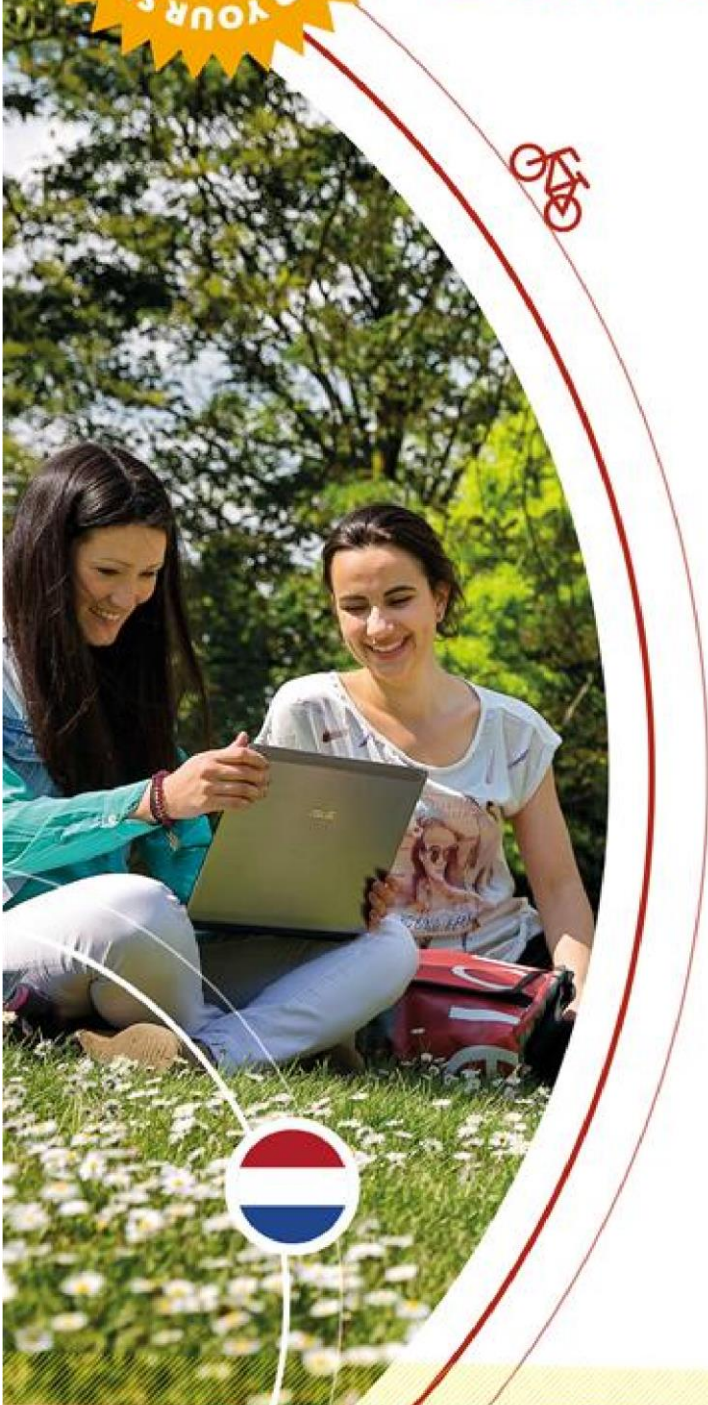




Radboud Summer School

*International Grail:
Communities-with-a-Heart*

3 – 7 July 2023





Course description:

How can we create inspiring and inclusive partnerships and cooperations that give voice to the marginalized (e.g., women, children, refugees, animals, trees, water)? How can we stimulate our organizations and communities to become an inspiring and impactful force in society? Uniquely combining three different angles – theology, public administration, and dialogical tools– this course strengthens the impact of yourself and your organization, by deepening drives, constructing valuable policy tools, and training dialogues that connect and inspire.

We live in disruptive times and transformation is required in many fields. This course enables you to increase your impact on a personal and organisational level - especially in the context of non-profit organisations or NGOs. We will talk with various organisations and leaders in and around Nijmegen and explore how to turn dreams into a strategy, a culture and results that inspire you, the organisation and society (the me-we-usmodel). A theology of vulnerability will help you understand how disruptive experiences can become a source for new inspiration, connection, and creativity. Public Administration will combine this with recent models of co-creating and engagement. Story Telling tools like Appreciative Inquiry, Tree-of-Life and the Dialogue Game Between Sun and Moon will help you to embody the theoretical lectures. At the end you will have a unique set of instruments, trained, and matched with your own ambitions, to change your context for the better.

The **5-day summer course** will follow five different stages: **Define** (Day 1), **Discover** (Day 2), **Dream** (Day 3), **Design** (Day 4) and **Deliver** (Day 5).

In the first stage of *Define* you focus on where your inspiration is found, how it is fed and where it is originating from. Combining ideals with your own life and history makes the connection so much stronger: what are the distortions you look at in society and how do they connect with you? What is the place of Ideals in your life and work? What sources of inspiration do you have and what is blocking them?

The stage of *Discover* starts with the first short workshop: how to have conversations that connect and inspire? How do you engage your context into your inspiration? Where does it fit and shine? How to strengthen these without ignoring the dilemmas and blocks on the way? We will visit inspirational organisations in the Nijmegen area to find out why people work as they work, talk as they talk and get results as they see it. Reflecting on the first two stages the group will engage in questions as “What gives life to you? What is your way of dealing from disruption? Where and how do you cross the threshold between discovery and dreams?”

The stage of *Dream* focusses on meaningfulness. What kind of changes in yourself, your organisation and society would be urgent and how are they connected? A game form will be developed to make this a very practical and open experience. Followed by a practical workshop on Appreciative Inquiry in organisational change: change by strengthening what works and fits the dreams. Harmonious positive change instead of restructuring cuts. That afternoon we will deepen the focus and the meaning of the Grail movement: their roots, dreams, ambitions, and actions.

The stage of *Design* gives way to more strategical and management sciences. In a short workshop Value management in profit- and non-profit sectors is introduced. The Public Value Concept is a worldwide effective network theory on Creating Public Value (Moore 1995), in the last ten years becoming more and more used in The Netherlands and many other countries where a large upcoming NGO-sector is developing. The key to this concept is the value-oriented network building, bridging many sectors. To envisage this in practice we will visit a highly successful and professional organisation on Social Housing in Nijmegen, where refugees, victims of violence, elderly, handicapped and many more are finding a good place to live, in an ‘inclusive neighbourhood’. In this stage we also bridge the personal and ambitious orientation to a more strategical and managerial implementation of inspiration in organisations.



The stage of Deliver will give more concrete tools for further implementation, by going into managerial concepts of levers of control. Inspiring the organisation on a well thought through path, means that acceptable and visible boundaries and values can be used. Change however is never easy. Organisational change theories will be used to complement the stage of Deliver, also putting social change, organisational change and personal change in balance with each other. A debate form will help us out in bringing the steppingstones of the circle together.

In the closing session the course is back to you: how do you balance change, inspiration, and strategy? What distortion was leading you and how did you manage? What distortion will be the result of your change and how do you engage the organisation into a better social impact?

Lecturers:

Prof. dr. Christa Anbeek is extraordinary professor for the International Grail Women and Care for the Future at FTR Radboud University. Email: Christa.anbeek@ru.nl

Prof. dr. Yvonne Sliep

School of Psychology, University of KwaZulu Natal, South Africa, Grail South Africa

Dr Mary Heidkamp

President/Founder of Dynamic Insights Consulting and Coaching since 1999. Grail USA, former member ILT Grail.

Prof. dr. Goos Minderman

Extraordinary professor Nonprofit governance of the Business School of University of Stellenbosch (RSA) and visiting professor at the Erasmus School of Accounting in Rotterdam

Drs. Mirjam de Niet

Policy and Lecturer Responsible Management Education

Level:

Advanced bachelor

Application:

Application is open, see: [RSS03.11 International Grail: Communities-with-a-heart - Radboud Summer School \(ru.nl\)](#)

The International Grail will make available scholarship for Grail members.